

TOP VIEW

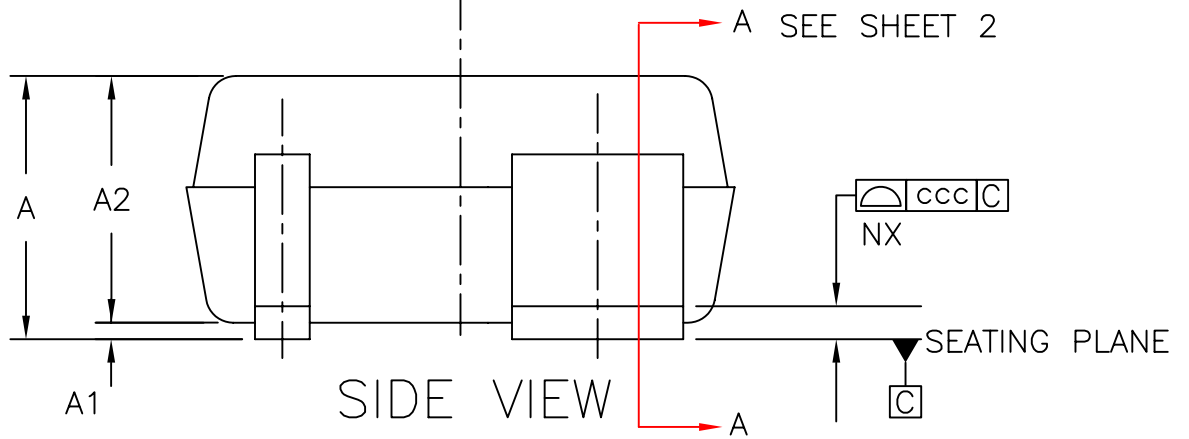


FIGURE 1

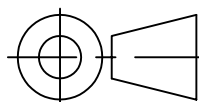
CTC APPROVAL CODE
300709PE3

FOR REVISION UPDATE PLEASE REFER TO HISTORY OF CHANGES.

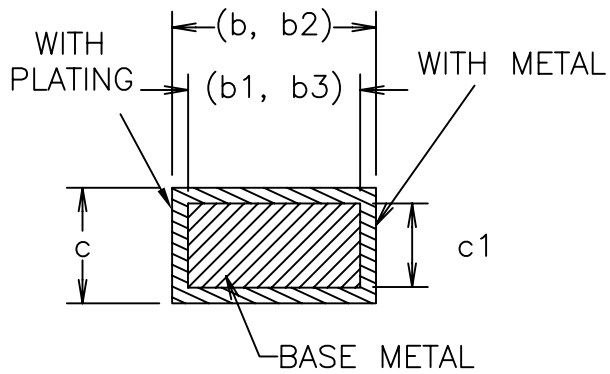
 **Carsem** Your Technology Partner

REV
A

ORIGINATOR	
REQUESTOR	
TOOLING DEPT MANAGER	
ENGINEERING MANAGER	
QA DEPT MANAGER	
CTC DESIGN DEPT MANAGER	



DWG NO : CM-4SC70-0093-REVA
SC70 4L PACKAGE OUTLINE (CUSTOMER SPEC)
PAGE: 1 OF 5



SECTION B-B
SECTION C-C

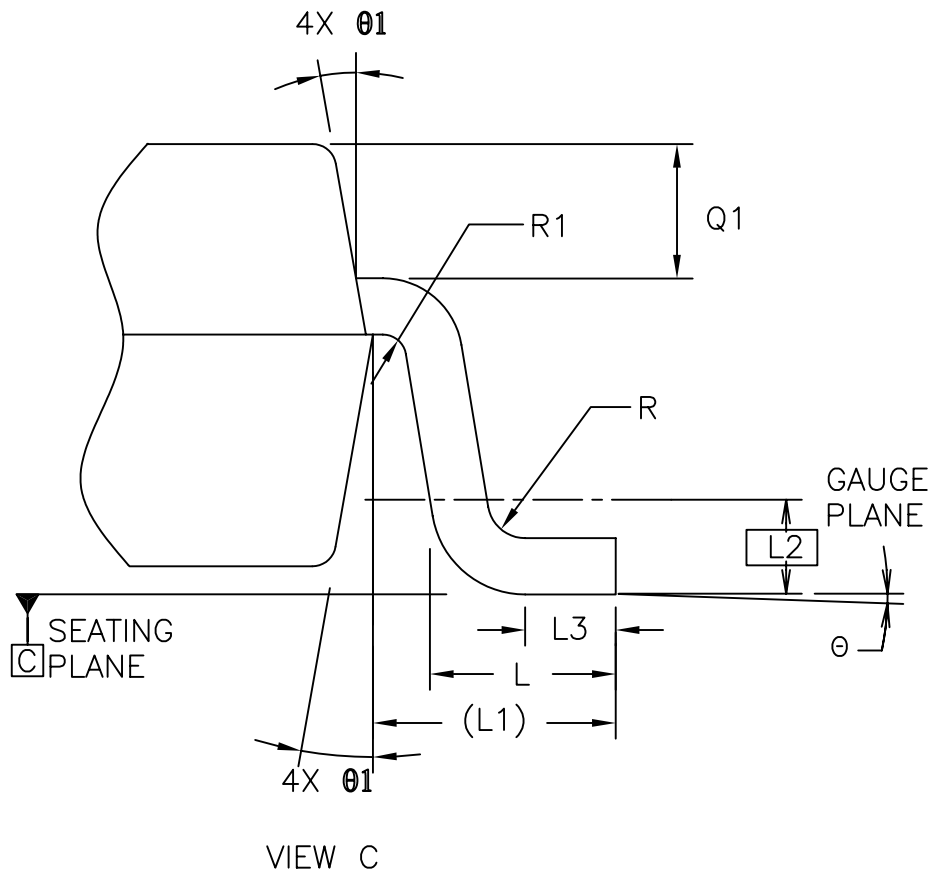
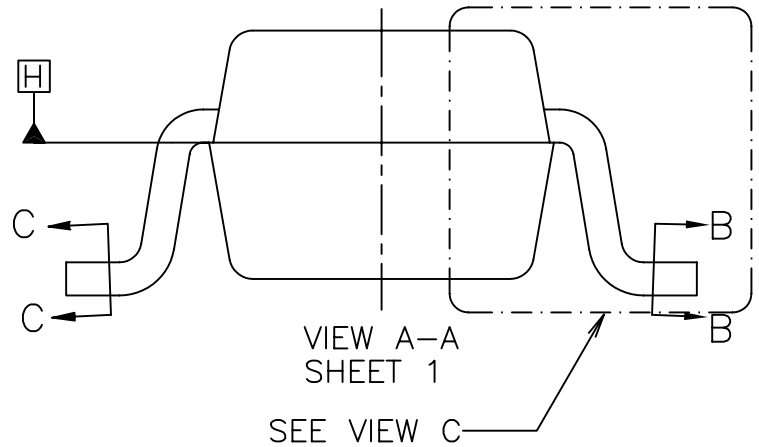


FIGURE 2

CTC APPROVAL CODE

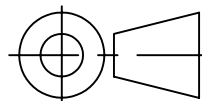
300709PE3

FOR REVISION UPDATE PLEASE REFER TO HISTORY OF CHANGES.

 **Carsem** *Your Technology Partner*

REV
A

ORIGINATOR	
REQUESTOR	
TOOLING DEPT MANAGER	
ENGINEERING MANAGER	
QA DEPT MANAGER	
CTC DESIGN DEPT MANAGER	



DWG NO : CM-4SC70-0093-REVA

SC70 4L PACKAGE OUTLINE
(CUSTOMER SPEC)

PAGE: 2 OF 5


COMMON DIMENSIONS AND TOLERANCES

SYMBOL	ALL DIMENSION ARE IN MILLIMETERS			NOTES
	MINIMUM	NOMINAL	MAXIMUM	
A	0.80	—	1.10	
A1	0	0.06	0.10	
A2	0.80	0.90	1.00	
b	0.15	—	0.30	
b1	0.15	0.20	0.25	
b2	0.575	—	0.700	
b3	0.575	0.625	0.675	
c	0.10	—	0.18	7,9
c1	0.08	—	0.16	7
D	2.00 BSC			3,4
E	2.10 BSC			
E1	1.25 BSC			3,4
e	0.65 BSC			
e1	0.50 BSC			
L	0.26	0.36	0.46	
L1	0.42 REF			
L2	0.15 BSC			
L3	0.10	—	0.30	
Q1	0.10	—	0.40	
R	0.10	—	—	
R1	0.10	—	0.25	
θ	0°	4°	8°	
θ1	4°	10°	12°	
NOTES	1,2,10			
REF				
ISSUE				

SYMBOL	TOLERANCES OF FORM AND POSITION	NOTES
aaa	0.15	
bbb	0.30	
ccc	0.10	
ddd	0.10	
NOTES	1,2,10	
REF		
ISSUE		

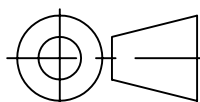
CTC APPROVAL CODE
300709PE3

FOR REVISION UPDATE PLEASE REFER TO HISTORY OF CHANGES.

 **Carsem** Your Technology Partner

REV
A

ORIGINATOR	
REQUESTOR	
TOOLING DEPT MANAGER	
ENGINEERING MANAGER	
QA DEPT MANAGER	
CTC DESIGN DEPT MANAGER	



DWG NO : CM-4SC70-0093-REVA
SC70 4L PACKAGE OUTLINE
(CUSTOMER SPEC)
PAGE: 3 OF 5

NOTES:

1. DIMENSIONING AND TOLERANCING PER ASME Y14.5M-1994

2. DIMENSIONS ARE IN MILLIMETER.

3. DIMENSION D DOES NOT INCLUDE MOLD FLASH, PROTRUSIONS OR GATE BURRS. DIMENSION E1 DOES NOT INCLUDE INTERLEAD FLASH OR PROTRUSION. D AND E1 DIMENSIONS ARE DETERMINED AT DATUM H.

4. THE PACKAGE TOP MAY BE SMALLER THAN THE PACKAGE BOTTOM. DIMENSIONS D AND E1 ARE DETERMINED AT THE OUTERMOST EXTREMES OF THE PLASTIC BODY EXCLUSIVE OF MOLD FLASH, TIE BAR BURRS, GATE BURRS AND INTERLEAD FLASH, BUT INCLUDING ANY MISMATCH BETWEEN THE TOP AND BOTTOM OF THE PLASTIC BODY. D AND E1 DIMENSIONS ARE DETERMINED AT DATUM H.

5. DATUMS A & B TO BE DETERMINED AT DATUM H.

6. THESE DIMENSIONS APPLY TO THE FLAT SECTION OF THE LEAD BETWEEN 0.08 MM AND 0.15 MM FROM THE LEAD TIP.

7. DIMENSION 'b' DOES NOT INCLUDE DAMBAR PROTRUSION. THE DAMBAR CANNOT BE LOCATED ON THE LOWER RADIUS OF THE FOOT.


8. CUSTOM LEADCOUNT VARIATION OF JEITA SC70.

9. THE MAX VALUE OF "c" (TERMINAL THICKNESS) INCREASES TO 0.19MM WHEN Cu BASE LEADS ARE ELECTROPLATED WITH Sn OR SnPb.

CTC APPROVAL CODE

300709PE3

FOR REVISION UPDATE PLEASE REFER TO HISTORY OF CHANGES.

 **Carsem** *Your Technology Partner*

REV

A

ORIGINATOR

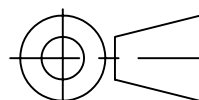
REQUESTOR

TOOLING DEPT MANAGER

ENGINEERING MANAGER

QA DEPT MANAGER

CTC DESIGN DEPT MANAGER



DWG NO : CM-4SC70-0093-REVA

SC70 4L PACKAGE OUTLINE
(CUSTOMER SPEC)

PAGE: 4 OF 5

HISTORY OF CHANGES

REVISION	DESCRIPTIONS	ORIGINATOR	DATE
0	INITIAL RELEASE IN JEDEC FORMAT	SH LOO	2009 MAR 25
A	ADD NOTE 9	SH LOO	2009-JUL-07

CTC APPROVAL CODE
300709PE3

FOR REVISION UPDATE PLEASE REFER TO HISTORY OF CHANGES.



REV A	ORIGINATOR			DWG NO : CM-4SC70-0093-REVA
	REQUESTOR			SC70 4L PACKAGE OUTLINE (CUSTOMER SPEC)
	TOOLING DEPT MANAGER			
	ENGINEERING MANAGER			
	QA DEPT MANAGER			
	CTC DESIGN DEPT MANAGER			PAGE: 5 OF 5