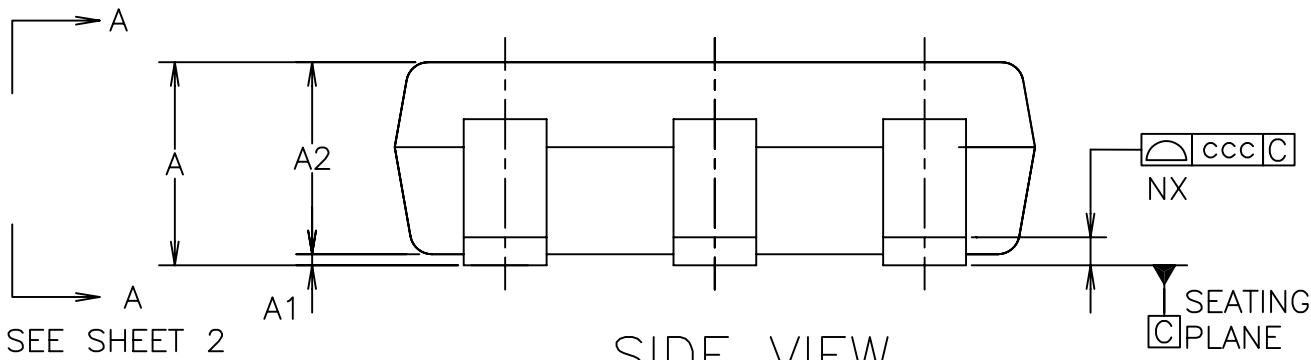


TOP VIEW



SIDE VIEW

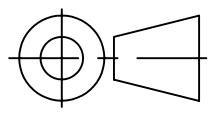
FIGURE 1

CTC APPROVAL CODE
020609PE5

FOR REVISION UPDATE PLEASE REFER TO HISTORY OF CHANGES.

 **Carsem** Your Technology Partner

REV A	ORIGINATOR	
	REQUESTOR	
	TOOLING DEPT MANAGER	
	ENGINEERING MANAGER	
	QA DEPT MANAGER	
CTC DESIGN DEPT MANAGER		



DWG NO : TSOT-CP0D-007
TSOT PACKAGE OUTLINE (CUSTOMER SPEC)
PAGE: 1 OF 5

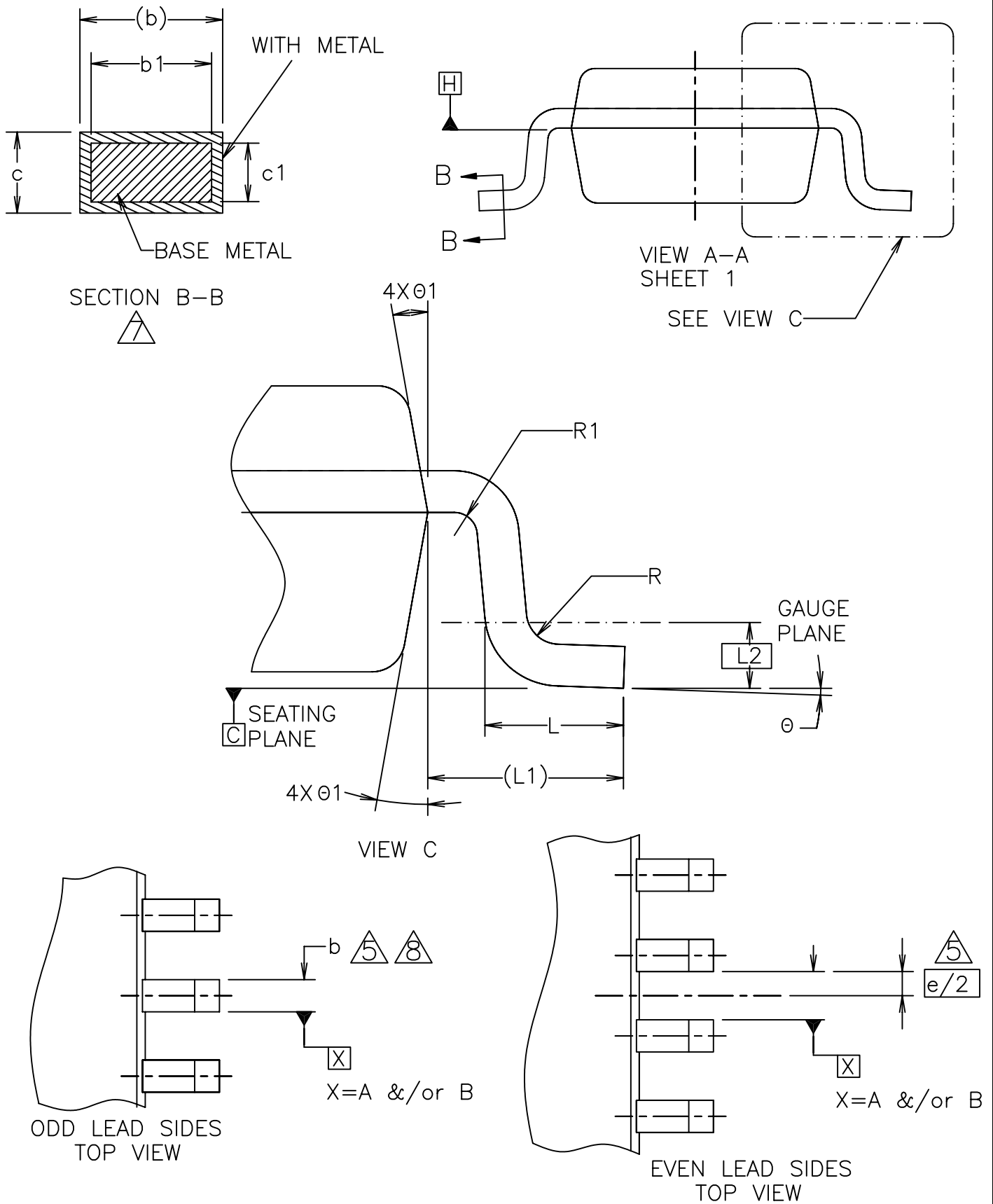


FIGURE 2

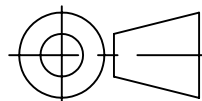
CTC APPROVAL CODE
020609PE5

FOR REVISION UPDATE PLEASE REFER TO HISTORY OF CHANGES.

 **Carsem** Your Technology Partner

REV
A

ORIGINATOR	
REQUESTOR	
TOOLING DEPT MANAGER	
ENGINEERING MANAGER	
QA DEPT MANAGER	
CTC DESIGN DEPT MANAGER	



DWG NO : TSOT-CP0D-007
TSOT PACKAGE OUTLINE (CUSTOMER SPEC)
PAGE: 2 OF 5

COMMON DIMENSIONS AND TOLERANCES

SYMBOL	ALL DIMENSION ARE IN MILLIMETERS			NOTES	SYMBOL	TOLERANCES OF FORM AND POSITION	NOTES
	MINIMUM	NOMINAL	MAXIMUM				
A	—	—	1.00		aaa	0.15	
A1	0.01	0.05	0.10		bbb	0.25	
A2	0.84	0.87	0.90		ccc	0.10	
c	0.12	0.15	0.20	7			
c1	0.08	0.13	0.16	7	NOTES	1,2	
D	2.90BSC			3,4	REF		
E	2.80BSC			3,4	ISSUE		
E1	1.60BSC			3,4			
L	0.30	0.40	0.50				
L1	0.60REF						
L2	0.25BSC						
R	0.10	—	—				
R1	0.10	—	0.25				
θ	0°	4°	8°				
θ1	4°	10°	12°				
NOTES	1,2,8						
REF							
ISSUE							

VARIATIONS

SYMBOL	AA			NOTES	△ ₆ AB			NOTES	BA			NOTES
	MIN	NOM	MAX		MIN	NOM	MAX		MIN	NOM	MAX	
b	0.30	—	0.45	7,8	0.30	—	0.45	7,8	0.22	—	0.36	7,8
b1	0.31	0.35	0.39	7,8	0.31	0.35	0.39	7,8	0.22	0.26	0.30	7,8
e	0.95BSC				0.95BSC				0.65BSC			
e1	1.90BSC				1.90BSC				1.95BSC			
N	6				5				8			

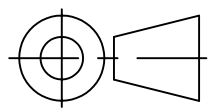
TOLERANCES OF FORM AND POSITION

ddd	0.20	0.20	0.13
NOTES	1,2	1,2	1,2
REF			
ISSUE			

CTC APPROVAL CODE
020609PE5

FOR REVISION UPDATE PLEASE REFER TO HISTORY OF CHANGES.

 **Carsem** Your Technology Partner

REV A	ORIGINATOR			DWG NO : TSOT-CPOD-007
	REQUESTOR			TSOT PACKAGE OUTLINE (CUSTOMER SPEC)
	TOOLING DEPT MANAGER			
	ENGINEERING MANAGER			
	QA DEPT MANAGER			
CTC DESIGN DEPT MANAGER		PAGE: 3 OF 5		

NOTES:

1. DIMENSIONING AND TOLERANCING PER ASME Y14.5M-1994

2. DIMENSIONS ARE IN MILLIMETER.

3. DIMENSION D DOES NOT INCLUDE MOLD FLASH, PROTRUSIONS OR GATE BURRS. DIMENSION E1 DOES NOT INCLUDE INTERLEAD FLASH OR PROTRUSION. D AND E1 DIMENSIONS ARE DETERMINED AT DATUM H.

4. THE PACKAGE TOP MAY BE SMALLER THAN THE PACKAGE BOTTOM. DIMENSIONS D AND E1 ARE DETERMINED AT THE OUTERMOST EXTREMES OF THE PLASTIC BODY EXCLUSIVE OF MOLD FLASH, TIE BAR BURRS, GATE BURRS AND INTERLEAD FLASH, BUT INCLUDING ANY MISMATCH BETWEEN THE TOP AND BOTTOM OF THE PLASTIC BODY. D AND E1 DIMENSIONS ARE DETERMINED AT DATUM H.

5. DATUMS A & B TO BE DETERMINED AT DATUM H.

6. PACKAGE VARIATION "AB" IS A 5 LEAD VERSION OF THE 6 LEAD VARIATION "AA" WHERE LEAD #5 HAS BEEN REMOVED FROM THE 6 LEAD "AA" VARIATION.

7. THESE DIMENSIONS APPLY TO THE FLAT SECTION OF THE LEAD BETWEEN 0.08 MM AND 0.15 MM FROM THE LEAD TIP.

8. DIMENSION 'b' DOES NOT INCLUDE DAMBAR PROTRUSION. ALLOWABLE DAMBAR PROTRUSION SHALL BE 0.08MM TOTAL IN EXCESS OF THE "b" DIMENSION AT MAXIMUM MATERIAL CONDITION. THE DAMBAR CANNOT BE LOCATED ON THE LOWER RADIUS OF THE FOOT. MINIMUM SPACE BETWEEN PROTRUSION AND AN ADJACENT LEAD SHALL NOT BE LESS THAN 0.07 MM.

CTC APPROVAL CODE

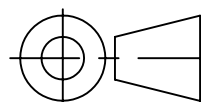
020609PE5

FOR REVISION UPDATE PLEASE REFER TO HISTORY OF CHANGES.

 **Carsem** Your Technology Partner

REV
A

ORIGINATOR	
REQUESTOR	
TOOLING DEPT MANAGER	
ENGINEERING MANAGER	
QA DEPT MANAGER	
CTC DESIGN DEPT MANAGER	



DWG NO : TSOT-CPOD-007

TSOT PACKAGE OUTLINE
(CUSTOMER SPEC)

PAGE: 4 OF 5

HISTORY OF CHANGES			
REVISION	DESCRIPTIONS	ORIGINATOR	DATE
A	NOTES 3.	SH LOO	2009-MAR-25

CTC APPROVAL CODE
020609PE5

FOR REVISION UPDATE PLEASE REFER TO HISTORY OF CHANGES.



REV A	ORIGINATOR			DWG NO : TSOT-CPOD-007
	REQUESTOR			TSOT PACKAGE OUTLINE (CUSTOMER SPEC)
	TOOLING DEPT MANAGER			
	ENGINEERING MANAGER			
	QA DEPT MANAGER			
	CTC DESIGN DEPT MANAGER			